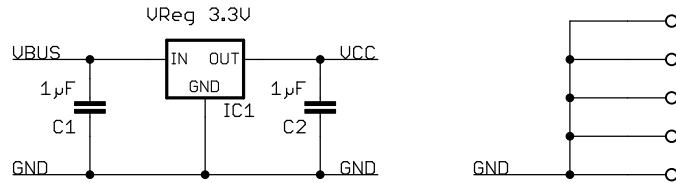
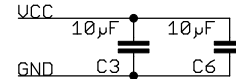
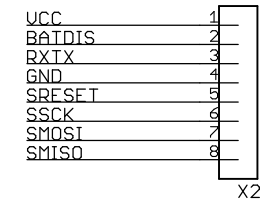


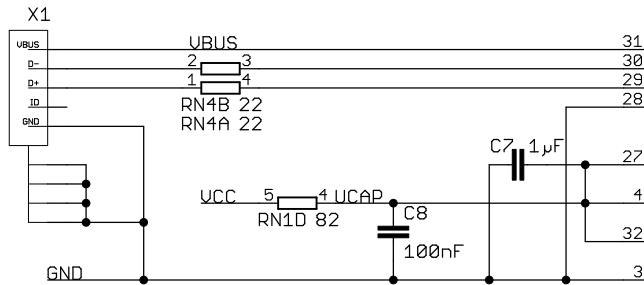
Power supply



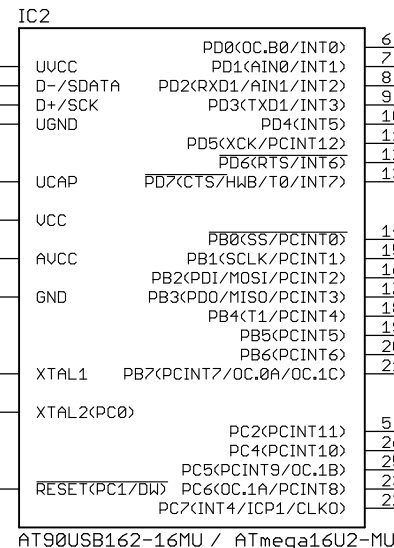
BOB3 programming interface



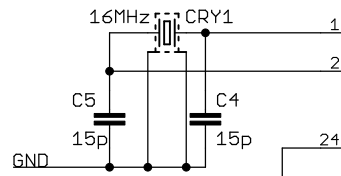
USB interface



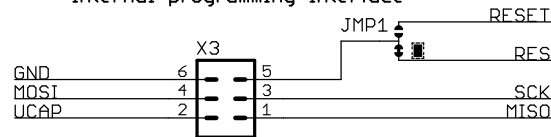
Microcontroller



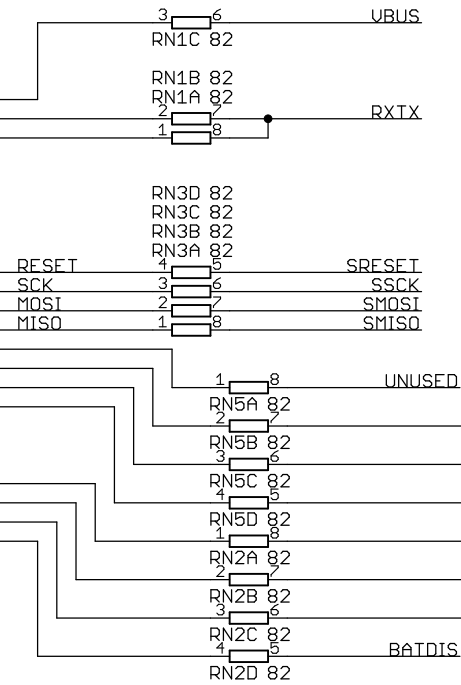
Clock generation



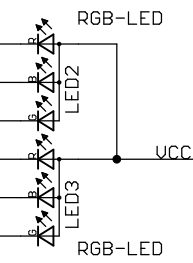
Internal programming interface



JMP1:
 default: X3 program target is IC2
 alt: use X3 as standard 6-pin AVR-ISP-programmer



Diagnostic LEDs



Project: ProgBob	REV: V1.5
AVR-ISP Programmer for BOB3 Robots with USB Interface	
Info: http://www.bob3.org	HTTPS://Q.NICAI.EU/
Engineer: Nils Springob	K3CUD
Date: 15.05.26 13:35	Sheet: 1/1